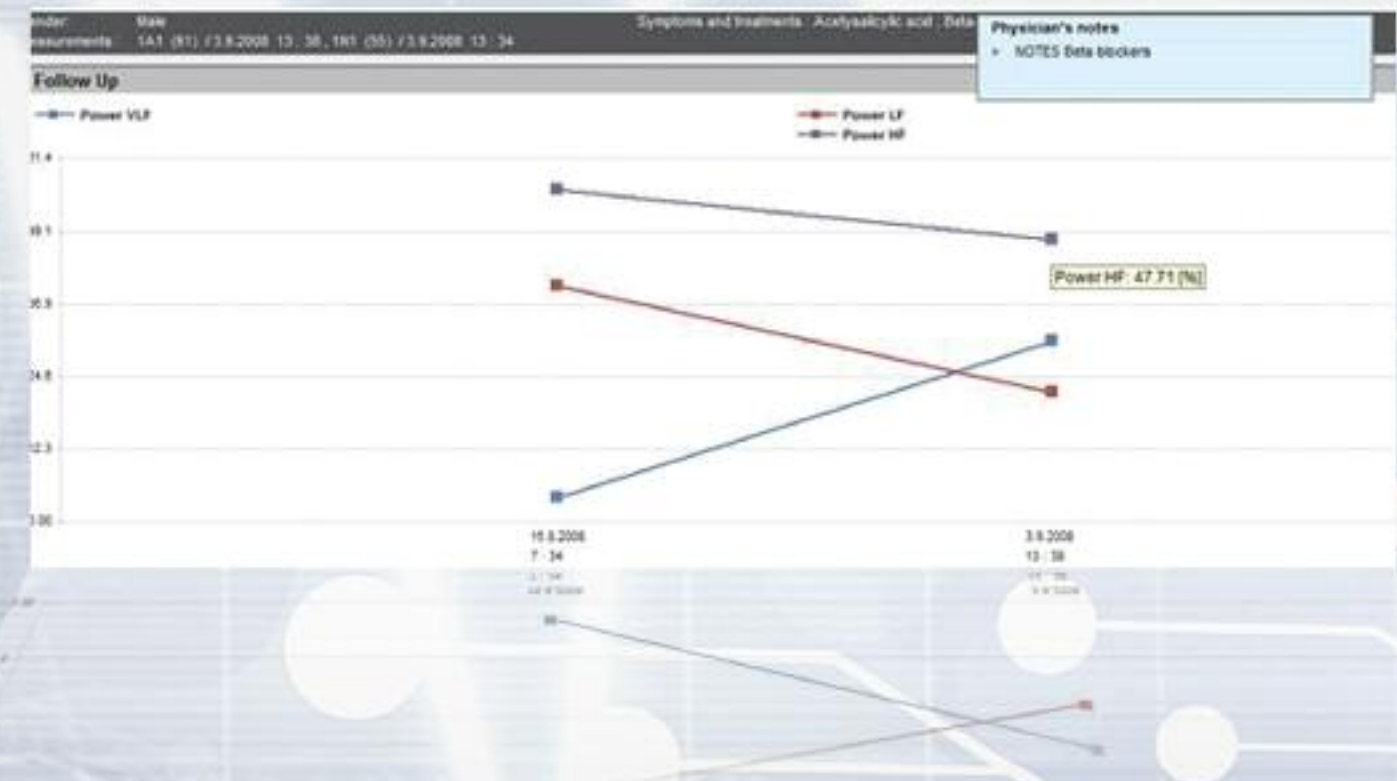
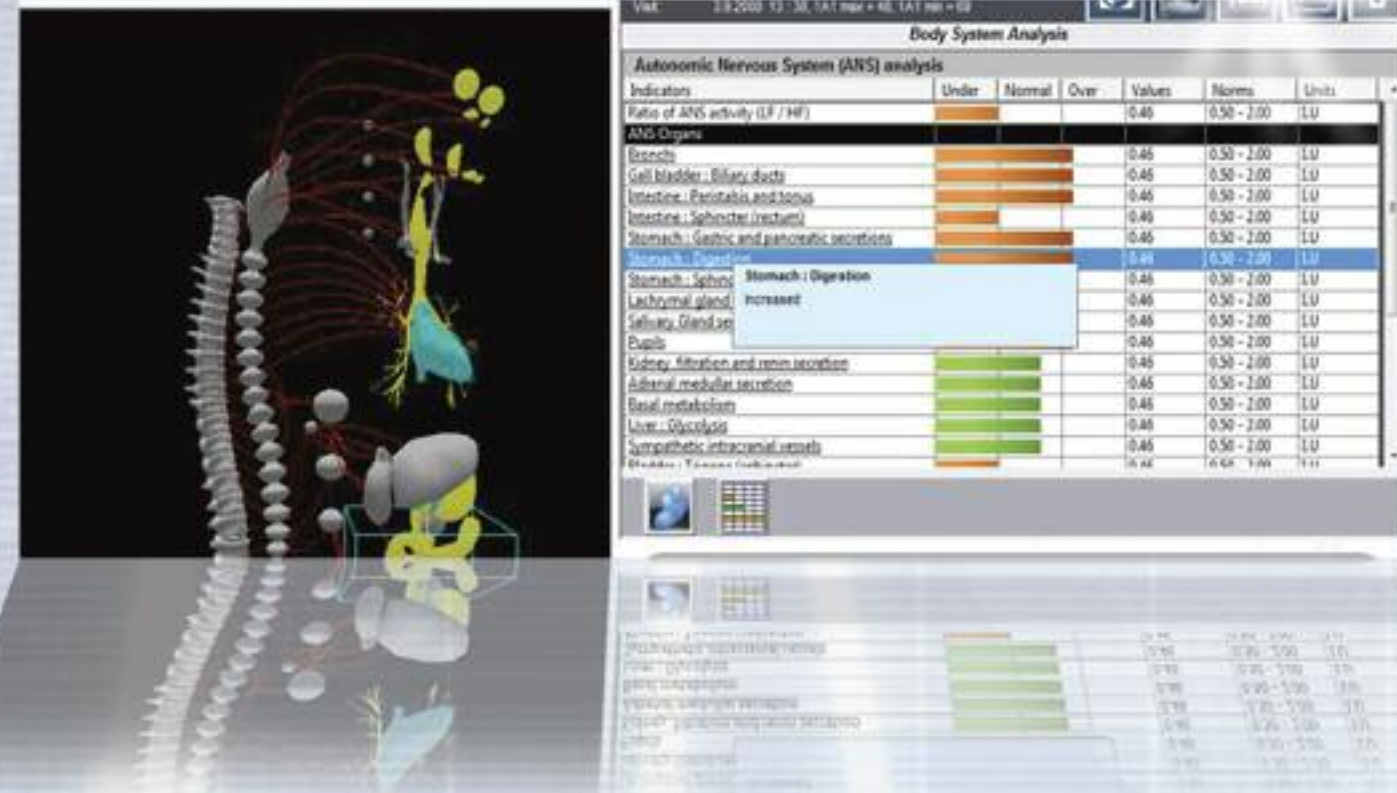
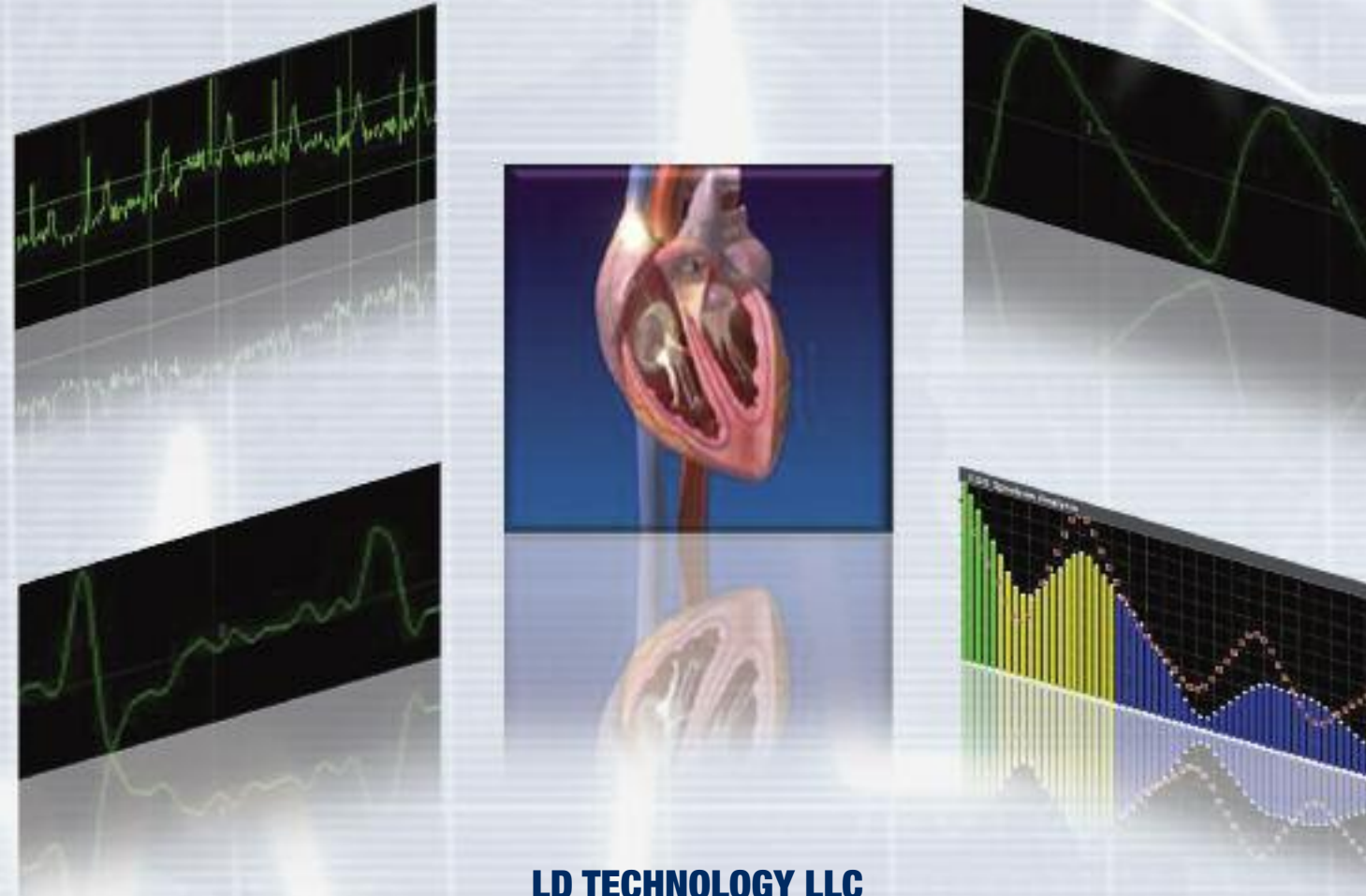


E.S. TECK PEMS



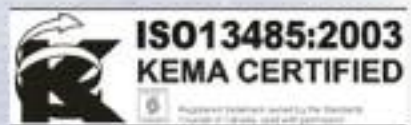
MODELING / FOLLOW UPS

E.S. TECK PEMS



LD TECHNOLOGY LLC

New World Tower
 100 North Biscayne Blvd Suite 500
 Miami, FL, 33132
 Tel: + (1) 305-915-1399 /+ (1) 305-594-2145
 Fax: + (1) 305-468-3956
 Email: albert.ldteck@gmail.com
www.ldteck.com



MANUFACTURER CONTACT

E.S. TECK PEMS

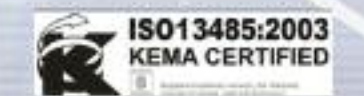


We are
 listening
 the body
 signals

WELCOME TO THE WORLD
 OF THE BIOSENSORS

- Oximeter
- Photoelectrical Plethysmography
- Heart Rate Variability

FDA 510k Clearance



BIOSENSORS

MODELING / FOLLOW UPS

MANUFACTURER CONTACT

E.S. TECK PEMS

E.S. TECK PEMS

E.S. TECK PEMS

HRV / SpO2 Results

The ES Teck PEMS is a programmable electro medical system (PEMS) including:

- USB plug and play hardware devices including electronic PCB, disposable electrodes, reusable cables and adult reusable SpO2 probe.
 - Software installed on a computer.
- The ES Teck PEMS is composed of 2 modules in 1 box with specific features controlled by unique software.

Intended use

Pulse Oximeter:

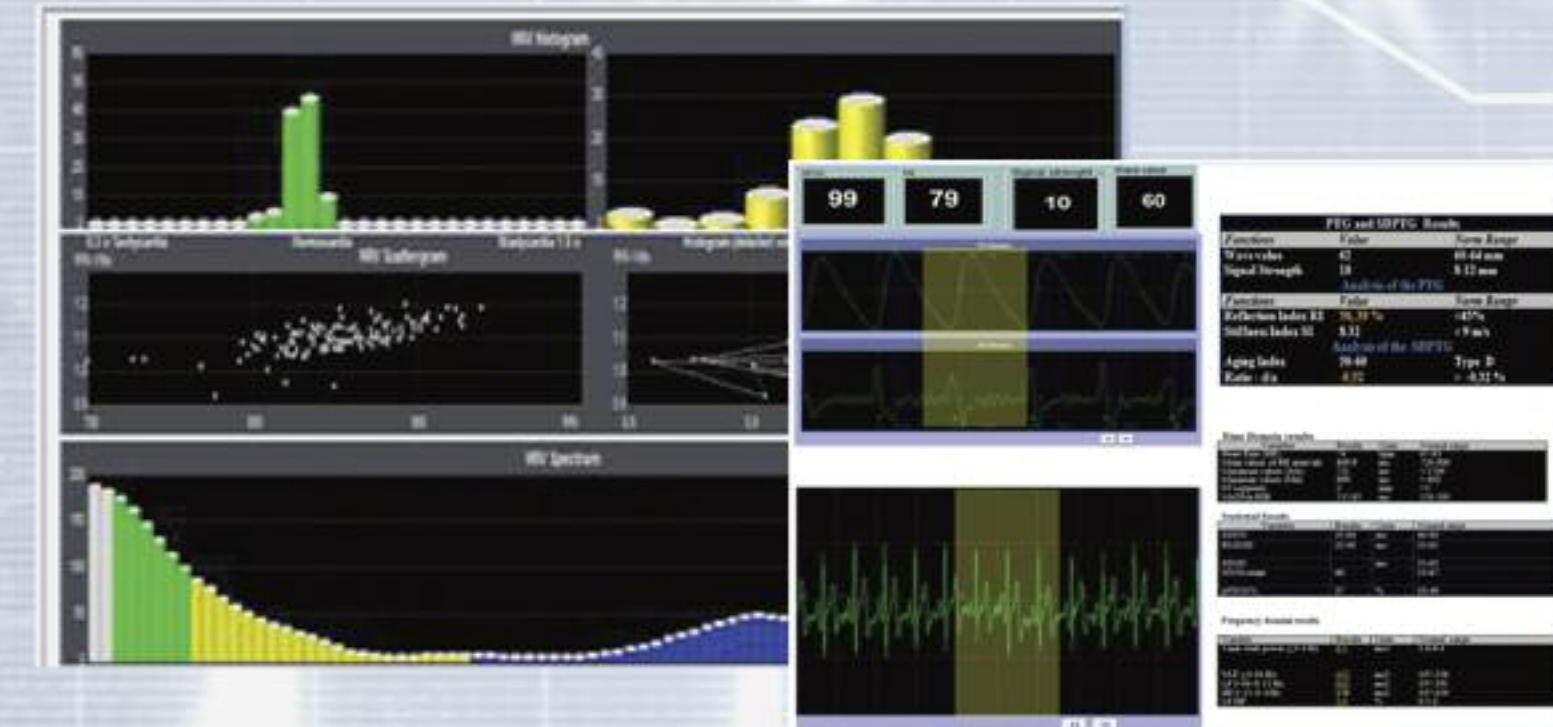
- To spot check or monitor Oxygen saturation of arterial hemoglobin (SpO2%) and pulse rate.
- To analyze the pulse waveform (Photoelectrical Plethysmography or PP) provided by the oximeter. It only provides mathematical analyses of the input of the SpO2 measurement which estimated vascular system's indicators.

Heart rate variability (HRV):

- To analyze the basic rhythms of the NN or RR intervals in heart rate, both in the time domain and in the frequency domain (short time 5 minutes). It only provides mathematical analyses of the input of the heart rate variability which estimated ANS (autonomic nervous system)'s indicators.

Contraindications

- Patients undergoing external defibrillation.
- Anyone with erratic, accelerated or mechanically controlled irregular heart rhythms.
- Arterial fibrillation/flutter.
- Atrio-ventricular block.
- Individuals who are unable to comprehend or follow simple instructions.
- This device should not be used in association with or presence of deibrillators, cardiac pacemakers, patients connected to electronic life support devices, or any implanted electronic device.
- This device should not be used on pregnant women. The effects on the fetus, as well as accuracy of readings are unknown.
- When using the finger probe, utilize the arm not in use for blood pressures, arterial lines, or having an AV fistula or pressure dressing.



Photoelectrical Plethysmography Results

