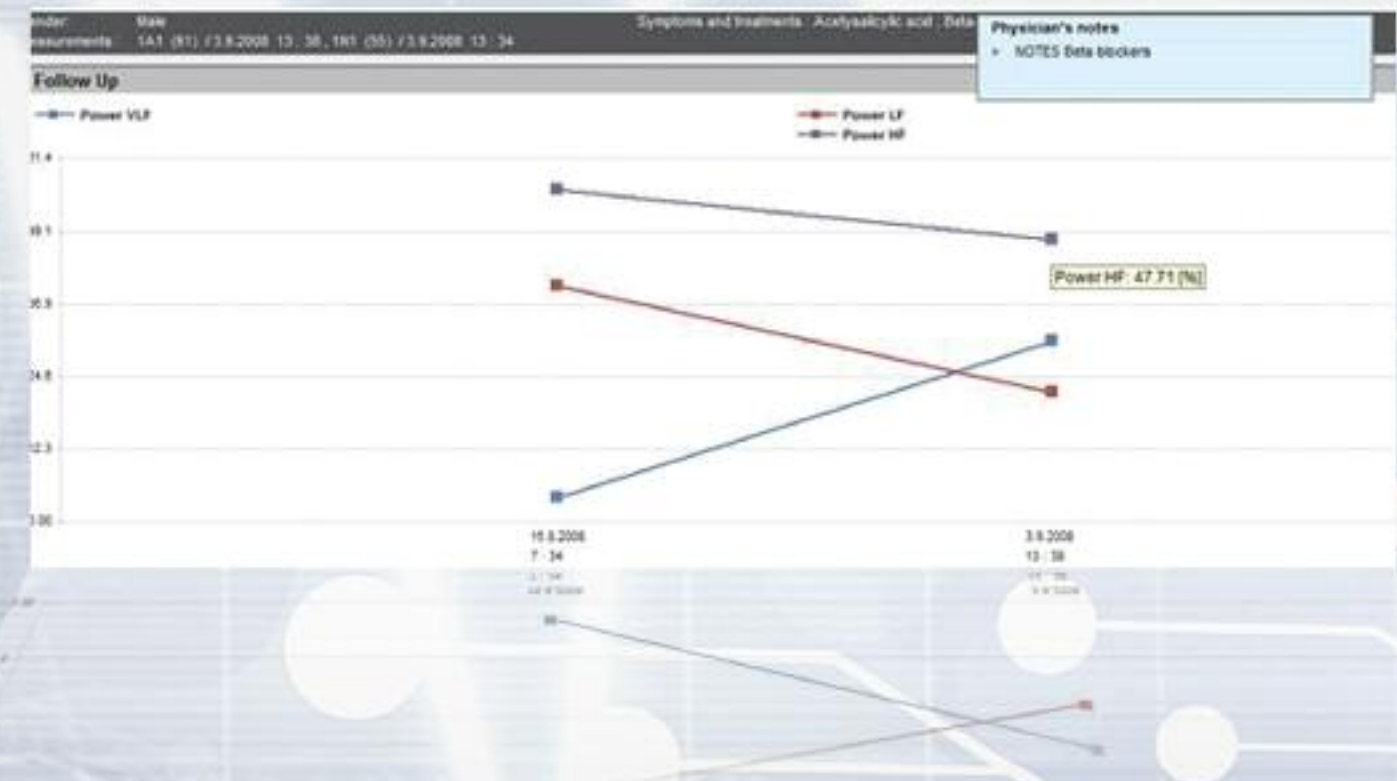
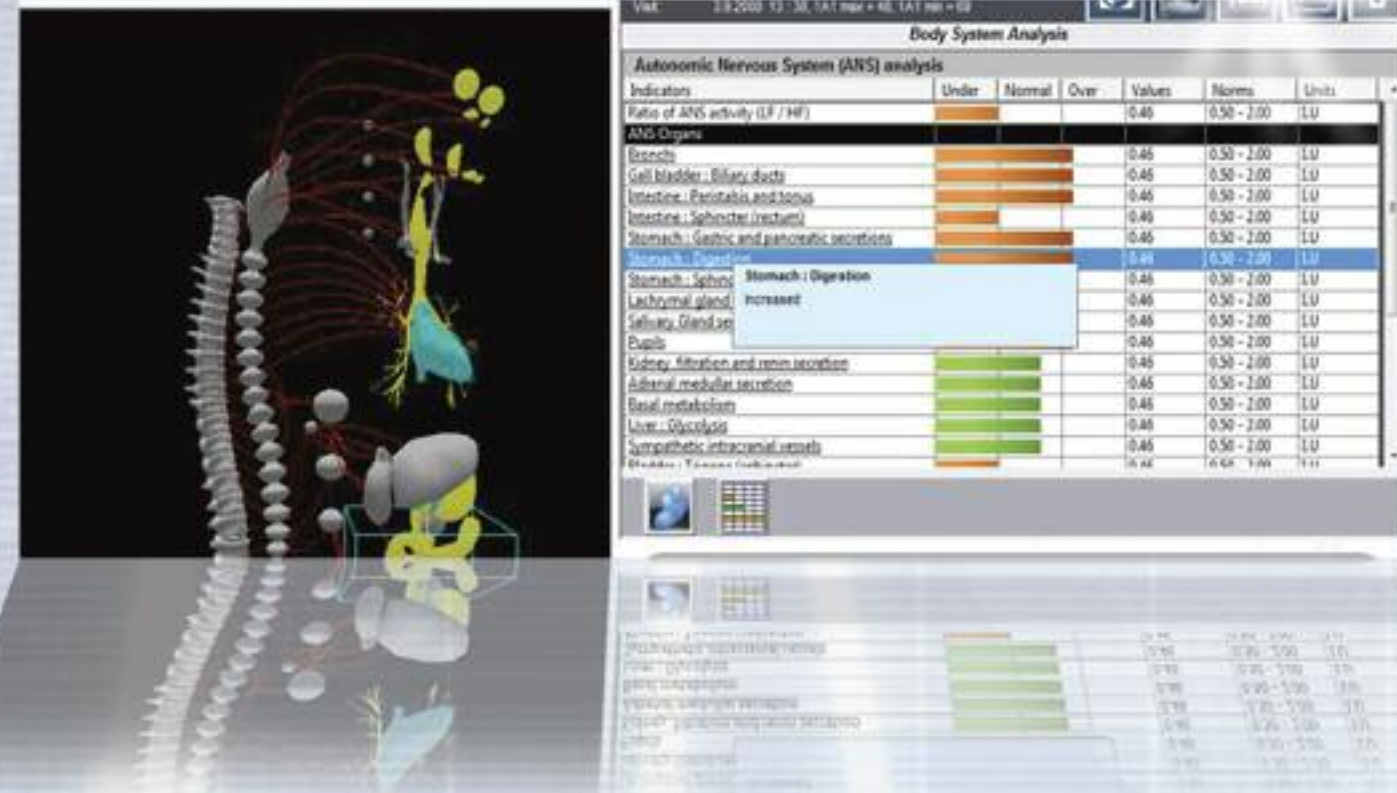
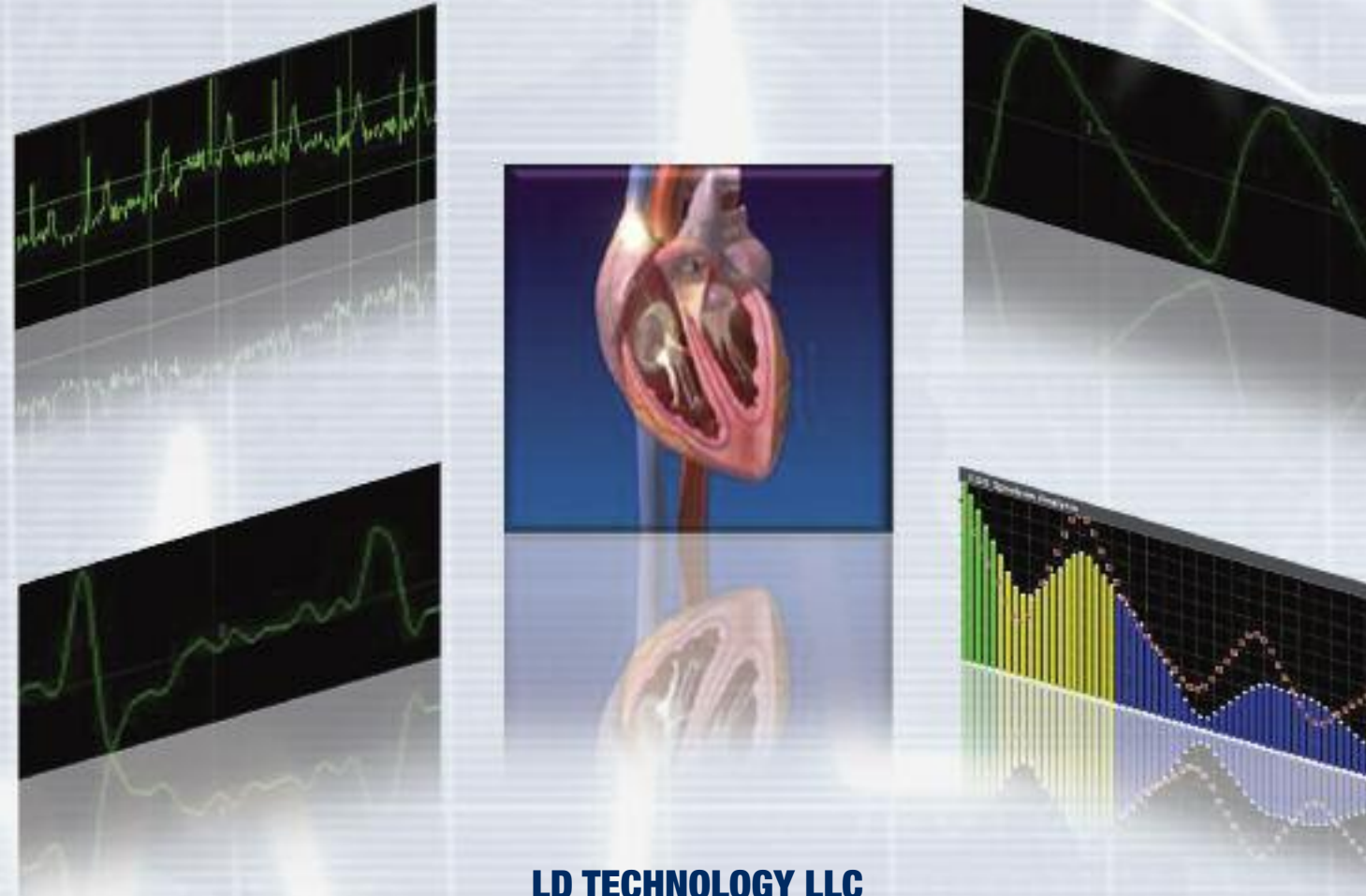


# E.S. TECK PEMS

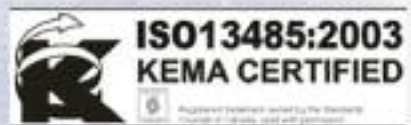


MODELING / FOLLOW UPS

# E.S. TECK PEMS



**LD TECHNOLOGY LLC**  
 New World Tower  
 100 North Biscayne Blvd Suite 500  
 Miami, FL, 33132  
 Tel: + (1) 305-915-1399 /+ (1) 305-594-2145  
 Fax: + (1) 305-468-3956  
 Email: albert.ldteck@gmail.com  
[www.ldteck.com](http://www.ldteck.com)



MANUFACTURER CONTACT

# E.S. TECK PEMS

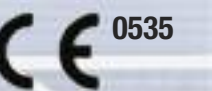
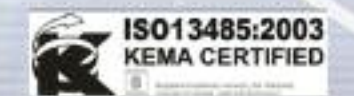


**We are listening the body signals**

**WELCOME TO THE WORLD OF THE BIOSENSORS**

- Oximeter
- Photoelectrical Plethysmography
- Heart Rate Variability

FDA 510k Clearance



BIOSENSORS

MODELING / FOLLOW UPS

MANUFACTURER CONTACT

# E.S. TECK PEMS

# E.S. TECK PEMS

# E.S. TECK PEMS

The ES Teck PEMS is a programmable electro medical system (PEMS) including:

- USB plug and play hardware including electronic PCB, disposable electrodes, reusable cables and adult reusable SpO2 probe.
  - Software installed on a computer.
- The ES Teck PEMS is composed of 2 modules in 1 box with specific features controlled by unique software.

### Intended use

#### Pulse Oximeter:

- To spot check or monitor Oxygen saturation of arterial hemoglobin (SpO2%) and pulse rate.
- To analyze the pulse waveform (Photoelectrical Plethysmography or PP) provided by the oximeter. It only provides mathematical analyses of the input of the SpO2 measurement which estimated vascular system's indicators.

#### Heart rate variability (HRV):

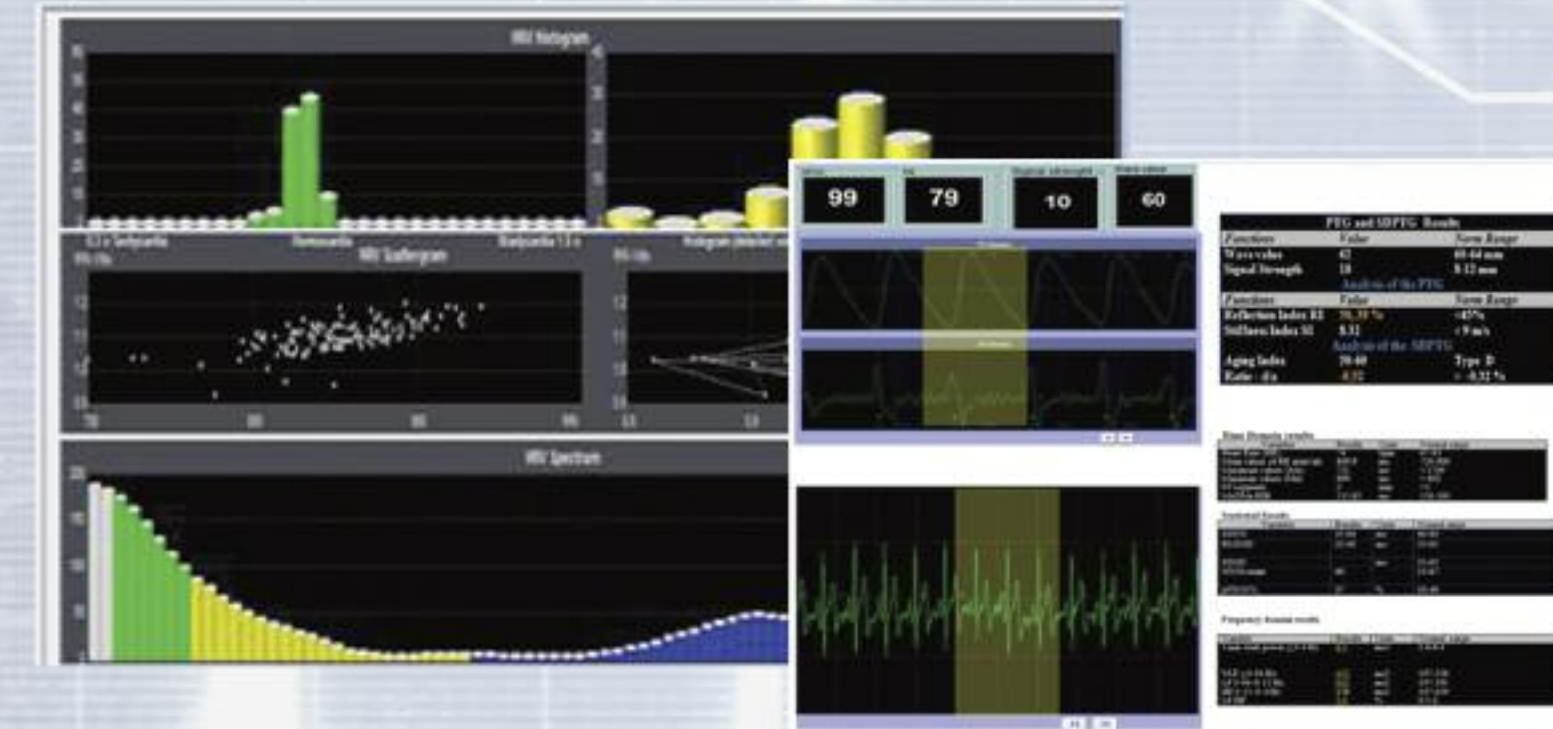
- To analyze the basic rhythms of the NN or RR intervals in heart rate, both in the time domain and in the frequency domain (short time 5 minutes). It only provides mathematical analyses of the input of the heart rate variability which estimated ANS (autonomic nervous system)'s indicators.

### Contraindications

- Patients undergoing external defibrillation.
- Anyone with erratic, accelerated or mechanically controlled irregular heart rhythms.
- Arterial fibrillation/flutter.
- Atrio-ventricular block.
- Individuals who are unable to comprehend or follow simple instructions.
- This device should not be used in association with or presence of deibrillators, cardiac pacemakers, patients connected to electronic life support devices, or any implanted electronic device.
- This device should not be used on pregnant women. The effects on the fetus, as well as accuracy of readings are unknown.
- When using the finger probe, utilize the arm not in use for blood pressures, arterial lines, or having an AV fistula or pressure dressing.



### HRV / SpO2 Results



### Photoelectrical Plethysmography Results

